

May 2024

Mt. Hood  
Quilt  
Guild



News from the Hood

Next Meeting

May 2

7:00 PM Check in starts at 6:30

President's Message



Hello Members!

“Quilts are never merely fabric and thread, seams and stitches; they are a product of a creative spirit.” Thomas Knauer, author of Why We Quilt

This was the opening statement made by an instructor at a workshop that I attended last weekend. It is so true. We see so many times the same quilt pattern, but each creator puts their own spin on the quilt. The easiest difference is how the colors of the fabrics are put together. I saw that last weekend and I see that every meeting during Show and Share. We are a creative group of individuals that have come together to feed on each other’s creativity. I love this group of fellow creatives.

I am excited to hear what our May speaker, Kathie Kerler, has to say about having our quilts judged. It is a scary idea to have a professional look at our quilts, but I firmly believe that I can learn so much about how to improve my skills by having someone look at my quilt techniques.

Hope to see you all on May 2.  
Tricia Crockett, Co-President

There have been some awesome quilt shows recently, I hope many of you were able to attend and see all of the creativity in our community.

Our Quilt Show Committee is making a lot of progress with the Raffle Quilt, and planning our show. I’ve been working on 2 quilts that I plan to enter in the show. Thank goodness I have all summer to work on them, it will be a busy year!

See you In May!  
Susan Ainsworth Smith, Co-President

**OFFICERS & COORDINATORS**

**Presidents:**

Susan Ainsworth Smith 503-577-1434

Tricia Crockett 503-310-4748

[president@mthoodquiltguild.com](mailto:president@mthoodquiltguild.com)

**Vice President co-chairs:**

Pam Hunt-503-819-2868

Liz Prom-503-522-2014

[vicepresident@mthoodquiltguild.com](mailto:vicepresident@mthoodquiltguild.com)

**Treasurer:**

Debbi Ragland 503-307-1258

[treasurer@mthoodquiltguild.com](mailto:treasurer@mthoodquiltguild.com)

**Secretary:**

RayeAnn Yapp-503-807-4846

[secretary@mthoodquiltguild.com](mailto:secretary@mthoodquiltguild.com)

**Membership Co-Chairs:**

Bernie Andreotti 503 869-8497

Mary Wiseman 503 314-2606

[membership@mthoodquiltguild.com](mailto:membership@mthoodquiltguild.com)

**Community Outreach Coordinator:**

Delleen Kompkoff 503-575-8327

[communityoutreach@mthoodquiltguild.com](mailto:communityoutreach@mthoodquiltguild.com)

**Small Group Coordinator:**

Debbie Johnsen 503-680-6494

[smallgroups@mthoodquiltguild.com](mailto:smallgroups@mthoodquiltguild.com)

**Challenge Coordinator:**

Lori Oathes 503-329-1707

[challengecoordinator@mthoodquiltguild.com](mailto:challengecoordinator@mthoodquiltguild.com)

**Newsletter Editor:**

MHQG Board

[newsletter@mthoodquiltguild.com](mailto:newsletter@mthoodquiltguild.com)

**Web Editor:**

Linda G-S 503-704-7672

[website@mthoodquiltguild.com](mailto:website@mthoodquiltguild.com)

**Quilt Show Committee Chair:**

Shirley Workman 503-659-3517

[quiltshow@mthoodquiltguild.com](mailto:quiltshow@mthoodquiltguild.com)

**AdHoc Chair:**

Marie Anderson 503-481-5117

[Adhoc@mthoodquiltguild.com](mailto:Adhoc@mthoodquiltguild.com)

**Equipment Manager:**

Ann Marie Rears 503-784-0089

[equipmentmanager@mthoodquiltguild.com](mailto:equipmentmanager@mthoodquiltguild.com)

**Retreat Coordinator**

Debbie Stoffer

[retreats@mthoodquiltguild.com](mailto:retreats@mthoodquiltguild.com)

**Liaison with Venue**

Julie Hale

[liaison@mthoodquiltguild.com](mailto:liaison@mthoodquiltguild.com)

# Vice President's Message



Greetings Y'all!

What have you been working on?

We have been working on a variety of things. We loved the Chunky Brick quilts that were “modeled” last month. It inspired us! So, among other things, we have been busy cutting out 3-1/2” X 6-1/2” rectangles. We will show and share sometime soon.

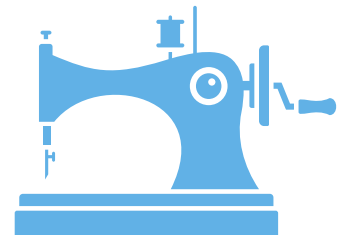
The Quilt show is fast approaching. We only have six meetings before the big event. There are many members working behind the scenes to make sure we have an awesome show. We would love to have you join in the fun. We have gotten to know so many amazing quilters from our guild by joining in where volunteers are needed. We would love to get to know YOU too! Please consider volunteering. There are lots of opportunities. Choose something that appeals to you!

In the past we have considered having a judged show but that sounds mysterious and intimidating to many of us. So, this month our speaker will be local, certified quilt judge, Kathie Kerler. She will explain the judging process from start to finish. We have learned that the judge’s critique is meant to HELP the maker. Who knew? Not us! We hope you will look forward to this presentation as much as we are.



See you at the meeting!

Liz and Pam 🦩🦩



**NOTE:** Members who wish to make announcements at our meetings please contact our VPs two weeks prior to meeting to ensure the announcements won't interfere with speaker time, or, notify Susan or Tricia (our Co-Presidents) since they have the full meeting agenda.

# Let's Celebrate May Birthdays

- 5/3 Shiver Carr
- 5/4 Becky Caputo
- 5/4 Deenie Richards
- 5/4 Susan Zook
- 5/6 Darlene McKinney
- 5/8 Susan Kubler
- 5/11 Kaye Hansen
- 5/11 Terri Wilson
- 5/13 Barbara LeCain
- 5/15 Jere Barrett
- 5/16 Terry Knott
- 5/17 Barbara Pelton
- 5/19 Jodi Nelson
- 5/19 Debbie Johnsen
- 5/23 Jan Brown
- 5/24 Penny Stewart
- 5/25 Janet Nelson
- 5/29 Lisa Ruhman
- 5/30 Linda Hill
- 5/30 Sharleen Rainville



## WHAT'S HAPPENING?

At every meeting, we “take a break” -- but really just take time to visit all the tables set up around the room.

Here are some of the things you should check out during your “break”

**Treasurer Table:** take time to pay for any guild activity

**24's a Charm:** This is where Lisa and her helpers sort the 5 inch squares that people drop off by 7:15 pm. You can go home with a variety of squares!

**Quilt Show Table:** Volunteer, get info about our upcoming Quilt Show

**Block of the Month/Challenge:** Drop off the block you sew and enter to win the blocks

**Long Arm Kits and Quilts:** Grab a top and supplies to Long Arm a larger quilt for Our Just Future/ Gresham Women's Shelter

**Fabric Sales:** Buy some fabric and support MHQG and Skip-a-Week

**Raffle Baskets:** Look at the great collection of items, and purchase tickets for the raffle

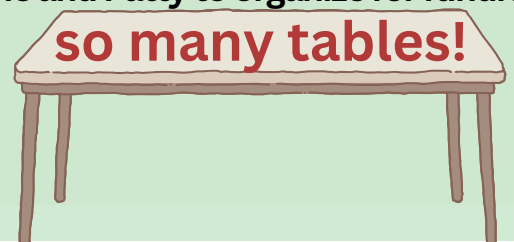
**Free Table:** Look and select items that have been shared by other members

**Retreat Table:** Ask questions, fill out forms, and pay for your retreat space

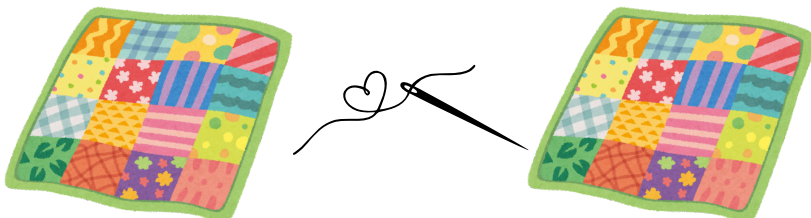
**Stitching Comfort:** pick up a kit, binding or quilting & drop off completed items for our agencies

**Also drop off fabric donations for Anne Marie and Patty to organize for fundraising**

**so many tables!**



 **This Month**  
**FABRIC SALE**  
**SKIP-A-WEEK**





# Treasurer's Report

March 31, 2024



YOU CAN PICK UP MORE  
**BOTTLE DROP  
 BAGS**  
 AT THE MEETING

Current Balance \$588.79



Monthly Summary of P & L - March 2024	
<b>Beginning Balance Checking Acct.</b>	<b>\$21,043.21</b>
<b>Income:</b>	
Basket Raffles at Meeting	\$172.00
Donations	\$1,070.00
Skip a Week donation - \$20.00	
PayPal Giving Fund - \$50.00	
BOM/UFO Donation - \$1,000.00	
Membership Dues	\$205.00
Guest Fees at Meeting	\$35.00
Meeting Income (fabric sales)	\$275.00
Advergingising	\$5.00
Retreat Registrations	\$210.00
<b>Total Income</b>	<b>\$1,972.00</b>
<b>Expenses:</b>	
Bank/Credit Card Fees	\$3.08
Basket Raffle Expenses	\$183.16
Comfort Quilt Expenses	\$47.50
Meeting Presenters	\$378.70
Equipment - Storage Tubs	\$220.15
Rent	\$1,100.00
	\$0.00
<b>Total Expenses</b>	<b>\$1,932.59</b>
<b>Ending Balance</b>	<b>\$21,082.62</b>
<b>Restricted Funds</b>	
Charitable Activity	\$3,638.31
UFO/BOM /Activities	\$1,877.31
Petty Cash on Hand	\$234.97

## Show and Share

We need to have two members volunteer to hold quilts every month and two more members volunteer to fold them for the person showing.

Click here to go to the [Show and Share](#) page on the website

## Board Meetings

All guild members are encouraged to join in the guild board meetings. The meetings are scheduled for the Thursday 2 weeks prior to the general meetings at 6:30PM.

If you are interested in reading the minutes of the meetings they are located on the Members' page of the website.

[Click here to read.](#)

Contact any board member for information.



# Message from Membership

---

Happy Mother's Day! Wow, we had 118 members (6 new members), 11 guests, and 7 on Zoom. Our current membership count is now 234. We implemented a prorated dues system for **new** members beginning March 2024. This will make it easier for new members to join during any month and then get on the August renewal cycle. All members will need to renew their membership every August.

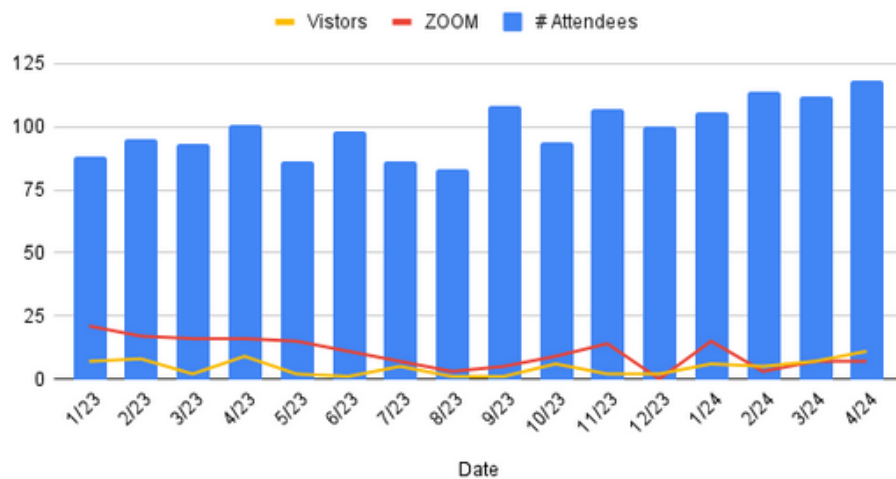
It is great to see many new faces, familiar faces and friends bringing friends! Be sure to check out all the ways you can get involved!

Please stop by the membership table if any questions or just to say hi!

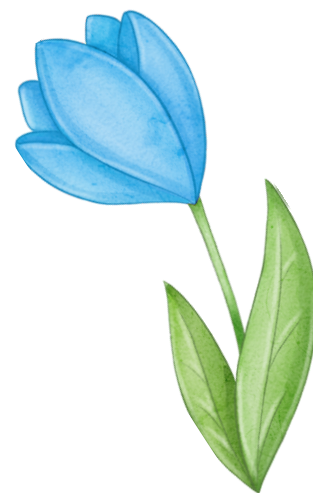
Bernie and Mary



MHQG Membership Attendance



# MAY BLOCK OF THE MONTH: GIANT TULIPS



This month we get to learn a new block which will give us practice with Stitch & Flip or “flippy” corners, color coordination and lining up seams. This month’s colors will be purple OR blue flowers, green leaves with a white background.

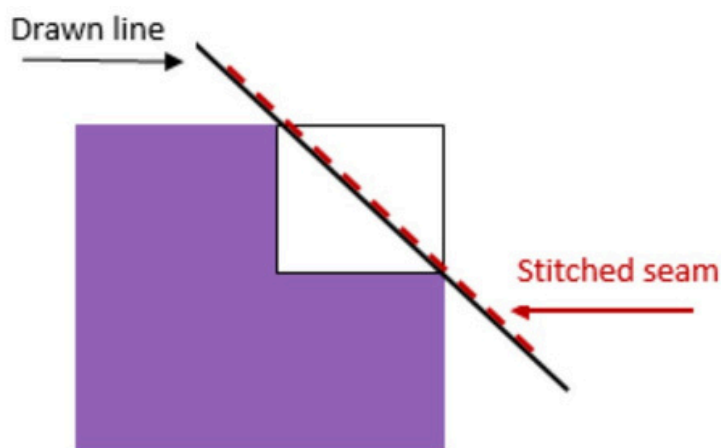
IMPORTANT- Please be sure your white fabric is indeed white.  
If you aren’t sure, hold it up against a piece of white paper to compare.

Drawing: 1 block = 1 entry and 2 blocks = 3 entries You gotta enter to win!

CLICK THE LINK BELOW & Look for May 2024 to find the FREE pattern:

<https://www.mthoodquiltguild.org/project-of-the-month>

## TIP OF THE MONTH:



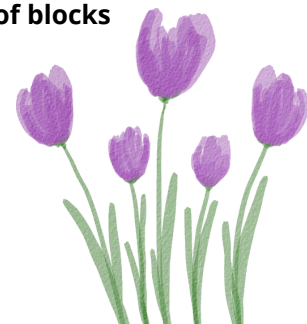
### Stitch & Flip Corners TIP:

Once you place the smaller square with a drawn diagonal line on the designated corner per pattern instructions, **sew directly next to the drawn line**, closest to the corner instead of on the drawn line. See red line above. This accounts for the thread and may help your corner come out a little more accurate. Always flip open the sewn corner to be sure it meets the corner before cutting.

### What is the Block Of the Month or "BOM"?

Each month the Guild provides a specific free pattern as a challenge for interested guild members to make. Most blocks have a skill to learn or practice to keep our skills sharp. The block(s) are then made and brought to the meeting to turn in for a drawing. The blocks are displayed to inspire all members. Normally one raffle ticket is given for each block turned in, and you can make more than one block for more chances to win! Watch for specials some months where you have a chance to get more tickets to win! A drawing is done for those who turned in blocks and the winner gets all the blocks! Sometimes when there is a large amount of blocks submitted, there may be more than one winner!

Give it a try- It is fun to finish a quick project, and you may just WIN the blocks !



# April Meeting Notes

April 4, 2024 (meeting held in MVCC Sanctuary as regular room under maintenance)

In Attendance: 112 members, 6 new, 11 guests, 7 on Zoom

Co-President Tricia Crockett opened the meeting at 7:00 pm, and reminded all to silence phones and where restrooms were located.

Vice Presidents Liz Prom and Pam Hunt highlighted the clothespin project, reminded all to read our Newsletter, and introduced guest speaker Reba Worotikan and her assistant Autumn from Majestic Batiks. She showed a video about the process of batik fabric creation, had a trunk show as well as fabrics for sale. Her website is Majestic Batiks - Wholesale Indonesian Batiks - Modern Quilting Fabrics.

General Announcements: Visit all tables including BOM, 24's a Charm, Fabric Finds, Free Table, Boutique Table, Our Just Future Wagon, Community Outreach, Longarmers, Raffle Baskets, and Clothespin Decoration Project.

Summer Sale: Patti Salvey-Sunde reminded the Sale will be Saturday, August 3rd, in the church front parking lot. She requested fabric and notion donations, volunteer help for set up, preparing fabrics for sale, organizing, and take down after the sale. All help is welcome and essential, whether a small or large amount of time is given by members.

Retreat in November at The Oregon Garden: Debbie Stoffer, Denise Bush, and Donna Taylor made announcements about registration fee, meals, lodging, sewing times, room, and equipment available. See the Retreat Page in the newsletter for details.

Longarm Kit "Crew": Susan Ainsworth Smith gave a history of guild long armers, described kit making, noted who receives our donations, and discussed the guild's contributions to Our Just Future's Womens' Shelter; the crew paraded a sample of four 48" x 72" quilts made to fit shelter cots.

Welcome "Committee": Michelle Barnhart asked for some help making sure our new members and/or guests are introduced to all the guild has to offer at our meetings.

Break from 7:58 - 8:15

Quilt Show: Shirley Workman reminded everyone that the guild has a verbal agreement for a new quilt show date for November 1st and 2nd, and to stay tuned for more information as she has it. See Quilt Show page in Newsletter.

Boutique: Raye Ann Yapp asked for volunteer help of any time commitment as well as items made to sell in the boutique at the quilt show; needed are sale item creation (list of videos/suggestions at the back table) and manpower to collect, inventory, and display items. See Boutique page in Newsletter.

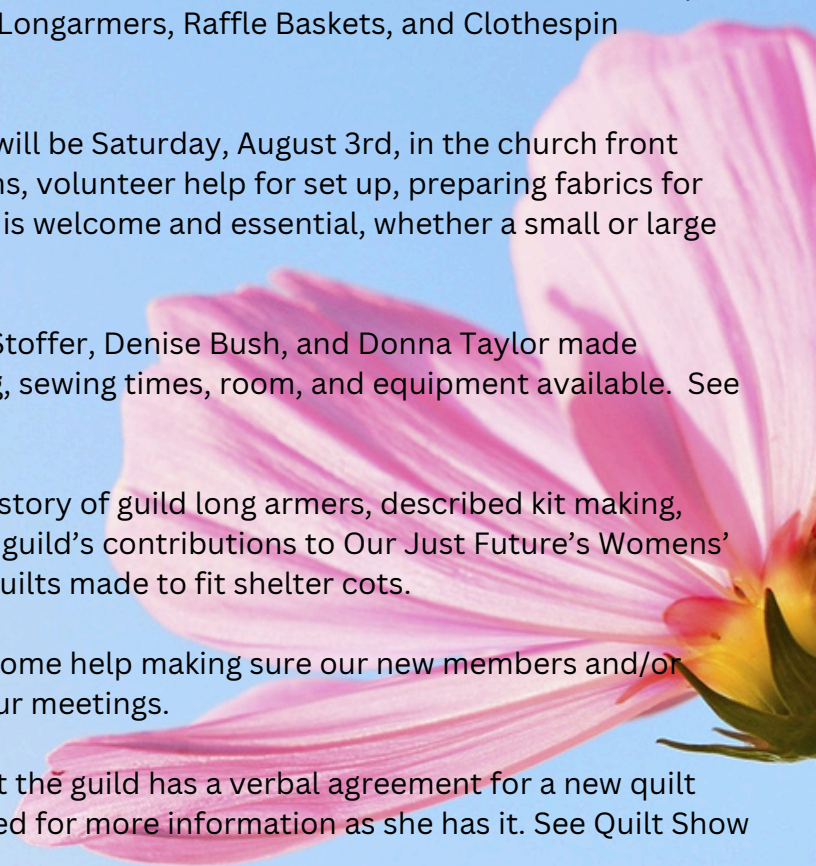
Suggestion Box: Tricia Crockett noted that while the suggestion box was intended to collect speaker or class suggestions, there was a request to be mindful of strong scents when coming to the meetings, as some are sensitive to them. She also reminded that the guild is a cooperative effort where volunteerism is not only a great way to meet people, but essential to the mission of the guild.

Block of the Month (BOM): Helen Bushue and Susan Banks each went home with sixteen little bird blocks!

Raffle Basket: Karen Smith, Pam Hunt, and Denise (last name?) were the April Raffle Basket winners.

Show and Share wrapped up the meeting.

Tricia Crockett concluded the meeting at 8:35. Submitted by Raye Ann Yapp, Secretary



**...these recent messages will warm your heart, and inspire you to keep donating...**

Hi Mt. Hood Quilt Guild,



My kiddo had a mystery GI bleed that lead to a fast trip to the ER, then a room at Randall's Children's Hospital. He had surgery the next day, and just was sent home today. There was a flannel backed quilt on the bed when we were admitted, and he bonded so fast with it. He's 3, and very protective of his Cozy Blankie.

I carried him out to the car in a wheel chair, wrapped up like a burrito in that quilt. He demanded to have his blankie in the car "so I be SOOOOO cozy."

Thank you for making his scary hospital stay a little brighter. Much love for all the work, time, coffee, sweat, tears, and likely blood (I stab myself with pins a bunch, so I assume everyone does too) that went into the creation of his Cozy Blankie.

<3 Tia (and my 3 year old Rory) Kiehl



Good afternoon!

I just wanted to drop a quick note of thanks. My daughter ended up in the nicu after she was born. Since she was full term, it caught us off guard. When we arrived at Randall's, the nurses brought us a quilt for her.

We have since been discharged and we love her quilt. It was so encouraging to me in the hospital to have something that made our space a little homier. We use it often for tummy time, naps, and to decorate her nursery. I saw the tag today with the name of the quilt guild and thought I'd send a note. I attached a photo of the quilt we chose.

Thank you!

Rachel McFeters

**MORE  
KITS  
AVAILABLE**



This year, we will continue to find ways to use our donated fabric to make needed items for

**Fill a Stocking Fill a Heart.**

Drop off any donations of Christmas fabric, stockings, knit hats or pillowcases.







- ~How does the **Community Outreach** program work at Mt. Hood Quilt Guild? Who are the people on the committee that make it work?
- ~Where do the quilts and other items go?
- ~How can you help?

As time allows, during upcoming meetings we will be introducing more aspects of the activities of **Stitching Comfort**. You saw the “**Long Arm Division**” at last month’s meeting, and now know how the larger-sized quilts are handled as they become ready to donate to the Gresham Women’s Shelter each month.

If you are great at piecing larger sized tops, or do long-arm quilting, you will probably interact mostly with **Doreen, Denise, Donna, Susan, and Debbie S.**

They meet to cut backs, batting, and prep kits for longarm members. They staff the table at each meeting where those kits go out and come back. Susan is the delivery person who takes supplies to **Our Just Future** each month. Please talk to any of these members for more info, or to get more involved with making larger quilts.

**The 40 x 60 Group** has many volunteers who work to see that quilts of that size are ready for donation. **Mt. Hood Medical Center** takes at least 15 adult-themed quilts of that size each month. **Becky** makes deliveries for us, machine quilts the tops, and has help from her mom, and neighbor to get the job done! You may see her at the end of the night taking out a huge cloth bag of quilts and tops that have been donated, and then she gets them ready for delivery. She is the person who usually gets the quilt tops from the laundry basket with the ADULT label each month.

Quilts with kid-themed fabric are handled by **Anne Marie** each month as she delivers to **Ronald Mc Donald House and Randall Children's Hospital**. She also drags out large fabric bags of quilts each month, does some quilting of tops, and uses friends to help with binding and other tasks. She has even taken her grandchildren on delivery drives, and given them a good education in helping others. Because of her snapshot of the recent Mc Donald delivery, I know there is one of “our” quilts near the piano in the music room there.

Quilts that are other sizes, and usually adult themed are delivered by **Ellen** for hospice quilts at **Hopewell House**. She takes finished quilts from our meetings or at Community Sew Wednesdays.

The busy women at the back table have a variety of jobs each month. There is a lot to do during meetings, but even more behind the scenes. **Delleen**, acting as coordinator writes this part of the newsletter. **Linda**, webmaster and newsletter editor does much more in those roles. She also stands at the table and answers questions, assists with donations, domestic-machine quilts our tops, and helps to get everything out to the parking lot and into cars each month!

Delleen cuts and packages fabric for 40x60 kits as well as kits for baby quilts. She coordinates other outreach opportunities for members to sew. She answers email directed to Community Outreach. She domestic-machine quilts many of the tops that are dropped into the laundry baskets each month when she can’t find anyone else to do it! Most of the quilts in the piles for binding are quilted by her, and in most newsletters, you will find a plea for more domestic-machine quilters to help. Maybe you can help out?

**Financial support** for needed purchases come from the Restricted Funds you see in each month’s treasurer’s report. That money accumulates from private donations made from quilt recipients, corporate donations, fundraising activities like Summer Sale, earmarked Quilt Show profits, and the sale of donated items from the community. Typical purchases are batting, labels for each quilt, and certain special needs like the fleece for TACTILE quilt backings. Batting for around 650 annual quilts is our greatest expense. All quilt kits for our tops each month are made from the donated fabric we receive from a variety of sources.....the same fabric supply in our storage unit, and used for **Fabric Finds** and **Summer Sale** as funding.

After reading all this, if you still have questions or ideas, please email [communityoutreach@mthoodquiltguild.com](mailto:communityoutreach@mthoodquiltguild.com) or help out by jumping behind the table at meetings to lend a hand and meet great people!

# BECOME INVOLVED

We need you to join the  
**Mt. Hood Quilt Guild Board**



Come visit a ZOOM meeting,  
and see if you would like  
to take one of the  
positions that will  
be nominated this summer.



**VICE PRESIDENT and SECRETARY**

**GET ACTIVE  
WITH THE GUILD**

# 24's a CHARM



Add variety to your stash by trading  
quilt shop quality 5" squares.

**THIS MONTH, BRING YOUR PATRIOTIC SQUARES**

Jun - Sports July - Animal



It's time to be charmed by all the new 5" squares  
you discover in your bag!

Write your name on a sandwich bag.

Fill it with your 24 PATRIOTIC CHARMS.

Drop it off by 7:15 PM.

Collect your new squares at the end of the  
meeting.



We have an average of 28 members who  
participate each month. Be sure to bring in a  
quilt you've made with charm squares for  
others to see. If you want to try out a charm  
quilt, there are kits available on the back  
table to sew up for donation.

## RAFFLE BASKETS



We're going to have raffle baskets  
again this month, check out the neat  
sewing/quilting items you can win!

We will have raffle tickets for  
purchase. \$1 for 1 or \$5 for 6

**Your participation helps raise  
\$\$\$\$ for the guild activities**

**KEEP READING!**

**MORE INFO, HELPFUL TIPS,  
AND SALE ITEMS AHEAD!**



Things to remember:

- Quilt shop quality fabric
- No selvages, cut on-grain only
- Be sure to use fabric you would love to receive!
- You may participate any month you wish

Questions? contact [Lisarhuman@gmail.com](mailto:Lisarhuman@gmail.com)

## DONATE NEW ITEMS TO EMERGENCY SHELTERS

We'll accept some gently used items in certain situations. Contact [volunteer@ourjustfuture.org](mailto:volunteer@ourjustfuture.org) or (971) 806-7789 for more info.



**CLOTHING** Undergarments, Pajamas & Outerwear

**DIAPERS & WIPES**

**BED LINENS** Sized for Cots, Twin, Full & Queen

**HYGIENE ITEMS** Dental Care, Hair Care & Lotion

**PET SUPPLIES** Food, Toys, Bowls, Collars & Cleaner

 **OUR JUST FUTURE**

At each guild meeting, Susan will have her red wagon available for your donations to Our Just Future.

Items are delivered to the Women's Shelter, and they disperse items to the Lilac Family Shelter, as appropriate.



[https://www.amazon.com/hz/wishlist/ls/K8EMCZG3KQZ3?ref=wl\\_share](https://www.amazon.com/hz/wishlist/ls/K8EMCZG3KQZ3?ref=wl_share)

## Helpful Hints from the Hood

Tip for May!

QUILTING RETREATS offer a unique opportunity to learn new things, make new friends, and enhance relationships with current friendships. All of this while enjoying your favorite hobby.

Before heading out for your retreat, check for quilt shops that you may want to stop at along the way. Invite other retreaters to go along with you, if you need a break from sewing!

You can turn your outing into a mini shop hop!



Do you have a helpful tip to share? Forward suggestions to: [retreats@mthoodquiltguild.com](mailto:retreats@mthoodquiltguild.com) and we'll add them to our growing list!



## Quilt Retreat - November 12 - 14, 2024

This is your retreat! We are back, after a few years hiatus, better than ever with plans for the best possible quilting retreat. We can't wait! It is going to be sew much fun. Have you turned in your registration form yet?

Members, please submit your deposit & registration form at the upcoming meeting in May. If we don't meet the minimum required number of attendees within our guild, we will open registration to outside our current guild.

If you have a friend, outside of guild membership, who would like to join in on the fun, we can take their registration in May. They would need to include an additional \$35 membership fee for the 2024-25 year (August) as we are asking all attendees to be current guild members.



Name \_\_\_\_\_ Phone \_\_\_\_\_

Address \_\_\_\_\_ City \_\_\_\_\_ State \_\_\_\_\_ Zip \_\_\_\_\_

Email \_\_\_\_\_

## Mt Hood Quilt Guild 2024 Quilt Retreat Nov. 12,13 and 14, 2024

### **Part 1 - \$160 payable to MHQG**

Sewing room will be open from **6 am until 10 pm daily on Tuesday, Wednesday and Thursday.** Tables are arranged in 8 person pods, 7 total. We will have 4 ironing stations and 3 cutting mats on raised tables. You will have room at your sewing station for TV tray style individual ironing boards. There is room for many to put up portable design walls, if desired. Catered lunches will be served daily.

Tuesday – 6oz Mesquite grilled Teriyaki chicken, salad, rice, cookies  
Wednesday – Street Taco Bar, garden salad, Spanish rice, brownies  
Thursday – Chicken Bacon Ranch Wraps, Chips and cookies

Dinner is on your own. There is a restaurant and bar on site that offers a great happy hour menu and also dinner service. There are microwaves and mini refrigerators in your rooms and downtown Silverton is just minutes away.

- \* \$160.00 is the total payable to Mt Hood Quilt Guild for Guild Members, (must renew in 2024)
- \* \$50 nonrefundable deposit is due when you turn in your registration form.
- \* First come, first serve. We will maintain a waiting list if necessary
- \* The remaining balance \$110 is due no later than the July guild meeting.
- \* No refunds issued after Sept. 15th, 2024 (Considerations may be given if we fill your spot).

### **Part 2 – Sleeping accommodations are made on your own**

Be sure to say you are with the Mt Hood Quilt Guild when you call to reserve your room. The resort has set aside 20 double queens and 5 kings for our event. It is up to you how many people share a room (1-4 people). Breakfast buffet, including coffee, is included as part of room accommodations.

Oregon Garden Resort  
895 West Main Street  
Silverton, Oregon 97381

**503 874 2500**

Check in 3pm / Check out 11 am  
\$139 per room per night + tax/fee

If you are an early bird, you might want to reserve your room starting Monday night. It's all up to you and your roommates how many nights you stay!

# MT. HOOD QUILT GUILD SMALL GROUPS

Small Group Coordinator:

Debbie Johnsen

[smallgroups@mthoodquiltguild.com](mailto:smallgroups@mthoodquiltguild.com)

**\*\* If anyone is interested in joining an evening or weekend Small Group, please let me know \*\*\***

## HANDWORK GROUP

New small group forming in the Estacada area

Tuesdays or Fridays 10 - 3

I can accommodate 4-7 people

Tables, power cords, iron & ironing board provided. Kitchen for lunches

Bring your handwork, piecework, knitting. This group will develop over time, the goal is to create a social setting for handwork.

Contact: Eileen McCloskey

503-860-6026, please

leave a message with a call back number.

## HANDWORK STITCHING

Meets 2nd Wednesday at Wendy Sternberg's home

Call or email for more info. Vaccinations required.

Wendy Sternberg - 503-853-5595

[wendycsternberg@gmail.com](mailto:wendycsternberg@gmail.com)

No openings

## WEDNESDAY SEWCIAL CLUB

Meets every Wednesday evening

Contact: Debbie Johnsen

[Debbie.johnsen@yahoo.com](mailto:Debbie.johnsen@yahoo.com)

503.680.6494

No openings

## SEW HAPPY

Meets 4th Monday 10-3

Contact: Laura Rom

[puma01.laura@gmail.com](mailto:puma01.laura@gmail.com)

971.244.2304

No openings

## THE GRATEFUL THREAD

Machine Embroidery Group

Meets 3rd Thursday 9 am to noon

via Zoom, link below

9:00 a.m. to 12:00 p.m.

Contact: Carol Sandberg

503-318-7944

[quiltmama050705@gmail.com](mailto:quiltmama050705@gmail.com)

Join Zoom Meeting

[https://us02web.zoom.us/j/89972089858?](https://us02web.zoom.us/j/89972089858?pwd=TGFwVWIHYklnRmtDZ2JSUWplYi9ZQT09)

[pwd=TGFwVWIHYklnRmtDZ2JSUWplYi9ZQT09](https://us02web.zoom.us/j/89972089858?pwd=TGFwVWIHYklnRmtDZ2JSUWplYi9ZQT09)

Meeting ID: 899 7208 9858

Passcode: 297507

## MYSTERY MAVENS

Meets 1st Monday 10-5

First Baptist Church Gresham

224 Powell Blvd., Gresham, OR 97030

Contact: Terry Knott

[quiltin00@aol.com](mailto:quiltin00@aol.com)

503.804.6367

## COMMUNITY SEW

First Baptist Church 224 Powell Blvd

2nd Wednesdays 10 am - 3 pm



**Lots of Available Space for More Members**

Sewing with a community, and Sewing for the community.

Contact: text - 503-575-8327

## OPEN SEW

Meets 1st Sunday from 10-3 via Zoom

[https://us02web.zoom.us/j/82093838229?](https://us02web.zoom.us/j/82093838229?pwd=S0VWZ3V1Y1BYck0eVjObm5Fblk0dz09)  
[pwd=S0VWZ3V1Y1BYck0eVjObm5Fblk0dz09](https://us02web.zoom.us/j/82093838229?pwd=S0VWZ3V1Y1BYck0eVjObm5Fblk0dz09)

Meeting ID: 820 9383 8229

Passcode: 402217

Contact: Linda Danley 360-721-3016

# OUR BUSINESS MEMBERS

## **Craft Emporium**

Lorajan Kelley  
19959 E Burnside, Portland, OR 97233  
503-805-4657  
[www.craftemporiumpdx.com](http://www.craftemporiumpdx.com)  
Instagram: @craftemporiumpdx

## **Craft Warehouse**

Gresham Station Shopping Center  
687 NW 12th St, Gresham, OR 97030  
503-907-3137  
[www.craftwarehouse.com](http://www.craftwarehouse.com) Facebook

## **Feather Your Nest Quilt Store**

Kris and Abbi Howatt  
130 N. Main Gresham, OR 97030  
971-220-0936  
FeatheredNest97030@gmail.com  
[featheryournestquiltstore.com](http://featheryournestquiltstore.com)  
[etsy.com/shop/FeatheredNest97030](https://etsy.com/shop/FeatheredNest97030)

## **Heidi's Garden Quilting**

Heidi Oliver  
16474 Swan Ave, Oregon City, OR 97045  
503-421-4327  
jrtluv@comcast.net  
[heidisgardenquilting.com](http://heidisgardenquilting.com)  
Facebook

## **Loli's Dream Quilting**

Linda Mosher  
503-860-4651  
[lmosher1234@gmail.com](mailto:lmosher1234@gmail.com)

## **Marie's Custom Quilting**

Marie Anderson  
59 NE 3rd St, Gresham, OR 97030  
503-481-5117  
[marieandersono@hotmail.com](mailto:marieandersono@hotmail.com)  
[mariescustomquilting.com](http://mariescustomquilting.com)  
Facebook

## **Pleasant Home LLC & Pleasant Home Longarm Quilting**

Digital E2E Quilting Services  
Jodi Nelson Sandy, Oregon  
[jodi.pleasanthome@gmail.com](mailto:jodi.pleasanthome@gmail.com)  
#503-313-7357 (texting preferred)  
Web: <https://www.thepleasanthomeco.com/>  
Instagram: <https://www.instagram.com/pleasant.home/>  
<https://www.instagram.com/pleasant.home.longarmquilting/>  
Facebook: <https://www.facebook.com/nelson.jodi>

## **Moravec Family Quilting**

Jeanette Moravec  
5288 SE El Centro Way, Milwaukie, OR 97267  
(319) 427-0138  
[moravecfamilyquilting@outlook.com](mailto:moravecfamilyquilting@outlook.com)

## **My Quilting Loft**

Kristi Villani  
253 E Historic Columbia River Hwy, Troutdale, OR 97060  
971-231-5638,  
[kristi@myquiltingloft.com](mailto:kristi@myquiltingloft.com)  
[myquiltingloft.com](http://myquiltingloft.com)  
Facebook, Community Facebook Group

## **Nine Patch Quilting**

Nancy Goldsworthy  
503-256-0746  
[ninepatchquilting@comcast.net](mailto:ninepatchquilting@comcast.net)  
[www.ninepatchquilting.com](http://www.ninepatchquilting.com)

## **Pleasant Home**

Longarm Quilting Services  
Jodi Nelson  
[www.thepleasanthomeco.com](http://www.thepleasanthomeco.com)

## **Save Stores**

6701 SE Foster Rd, Portland OR  
503-775-7283  
[savestores.com](http://savestores.com)  
Facebook

## **Shepherd's Garden Quilting**

Rebecca Tellez  
775 NE 9th St, Gresham, OR 97030  
503-888-3415  
[rebecca@shepherdsgardenquilting.com](mailto:rebecca@shepherdsgardenquilting.com)  
[shepherdsgardenquilting.com](http://shepherdsgardenquilting.com)  
Facebook

## **Women-SEW Global Foundation**

LaVerne Lewis  
3604 SE Powell Valley Rd #324  
Gresham, OR 97080  
503-674-2574  
[lavernel@womensewglobalfoundation.org](mailto:lavernel@womensewglobalfoundation.org)  
[womensewglobalfoundation.org](http://womensewglobalfoundation.org)  
Facebook

# Quilts of the East Wind- MHOQ Quilt Show



## November 1st and 2nd Quilt Show Setup on Thursday Oct. 31 8am-4pm

quiltshow@mthoodquiltguild.com.  
Shirley Workman  
Quilt Show Chair

## The 2024 Raffle Quilt Tickets



Thanks to the many members who cut 1296 strips, sorted them, constructed 48 blocks, and put those blocks together. Our thanks also go to Susan Ainsworth Smith, who quilted it. We will start the sales at our May meeting.

### Ticket prices:

\$4  buys one

\$10  buys three

\$20  buys seven

# HELP NEEDED

The quilt show committee has made a list of places where it could be possible to sell raffle tickets. It is a long list, so we are asking all members to help. If you are a member of another guild or would just like to help out at one of these community events, please contact Dale Ricklefs.

514 669 1753 or [Dalericklefs@gmail.com](mailto:Dalericklefs@gmail.com)  
She will be coordinating this effort.

It is not difficult; the quilt will sell itself. I recommend going with a buddy or two. We will give you all the support and instructions you will need.

This is our list of possible places to sell Raffle Quilt tickets:

#### Community Events

The Oregon State Fair  
Clark County and Multnomah County Fairs  
Third Thursday event in downtown Gresham.  
Troutdale's First Friday  
Pioneer Quilt Shop's summer outdoor sale  
Gresham Farmer's Market  
Hot August Night Car Show in Gresham  
Gresham-Troutdale Walk  
Gresham Art Walk in August

#### Other Quilt Guilds

Metropolitan Patchwork Society  
Garfield Skip-a-Week Quilt Club  
Westside Quilter Guild  
Columbia River Gorge Quilters' Guild  
Tualatin Valley Quilt Guild  
Northwest Quilters  
Mid-Valley Quilt Guild  
Clark County Quilters  
Modern Quilt Guild

A portion of the proceeds will go to Stitching Comfort to help pay for batting and other needed supplies.

Be sure to check out the Boutique page in this Newsletter.



# It's Boutique Time!

Hi Everybody!

May 2024 Newsletter

Here we are in late April already...and the '24 Quilt show will be held this November 1st and 2nd (instead of in October as previously thought), so the countdown is on. Many thanks to those of you who have already offered and begun creating items for sale in the Boutique. The enthusiasm is wonderful!

If you need fabric for boutique items, please check with Patti at the Fabric Finds table in the back of the meeting room on all even-numbered months. The guild wants to supply your efforts free of charge since you are donating your talent and precious time. Again, we'll have lists of creations to make with links to videos or patterns if you need some inspiration. We'll also have a sign up list for those who'd like to help with Boutique set up, cashiering, inventory management, item display/merchandising, and take down after the show. If you have any questions about what these tasks include, please see us at the back table on the break. We'd love to talk to you!

If you have items to drop off we'll have a bin for them, but we'd like to log them in too. Janet is a stickler for detail and keeping track of all things Boutique-related. To update our wish list, here are May's requests: cord keepers, iPad covers, pen/pencil or brush-keeper roll ups, sewing machine pads with pockets for notions, and pin cushion/thread catcher combos. Of course, we won't turn away any work you've created! Anything mentioned previously is also welcome.

There will be a table at the member meetings from April until September where you can pick up a list of requested things that have sold well, fabrics, patterns, and ideas for new designs...

For additional information, see the Guild's Facebook page, and stay tuned for the monthly newsletter. We're looking forward to working with everyone for another successful show!

The 2024 Quilt Show Boutique Committee  
Raye Ann Yapp [secretary@mthoodquiltguild.com](mailto:secretary@mthoodquiltguild.com)  
Janet Larson





# Q'nique Longarm Quilting Machine & Frame for Sale



Includes quilting machine, frame, and over a thousand dollars of extra accessories. This amazing frame on wheels can be set up as a 5' or 10' system.

***THIS SYSTEM IS SETUP AND READY FOR YOU TO TEST!***

***I'm offering a \$200 thank-you gift to anyone who connect a buyer with me!***

Scan QR code for

Location: Gresham, OR **A full video tour!**

Condition: **Like New**  
Stitching hours: 21

Cost: \$4,600.00 **OBO**

Contact: Holly Hicks 503-793-7271



**FOR SALE**

## **DOUBLE WEDDING RING QUILT TOP**

Measures 80" x 95 " Completely hand stitched

Possibly made in the 1950's

Fabric appears to be 1930's reproduction fabric

Price: \$100.00 ~ Cash only

Contact: Jan Sifford @ 503-502-2698

Purchase benefits Portland Adventist Community Services

Have something  
quilt related to sell?  
Advertise in our  
newsletter for only  
\$5 a month.



