

SEPTEMBER 2022

Mt. Hood
Quilt
Guild



News from the Hood

NEXT MEETING SEPTEMBER 13

7:00 pm

Mountainview Christian Church / Zoom

President's Message

Happy September Everyone!

Before I forget....before you forget...let's all remember:

1. Renew your membership
2. Print your entry form and enter your quilts
3. It's getting dark earlier - let's get the car pools going for meetings.

OK, now that we will all remember that....Are you ready for some random trivia?

*Quilted clothing, curved piecing, vintage everything and muted earth colors are supposed to be "in" this year.

*Improv piecing, EPP, FPP, random scrap usage, pictorial quilts and landscape quilts are trending.

*2 tone quilts, modern patterns and panels are on the rise.

*The quilt market is a 4.2 billion dollar market and is expected to reach 5 billion by 2026-2027.

So, when you are purchasing your fabric, new pattern, quilt show item, class, etc. remember you are contributing to this market. And when your partner or spouse exclaims about the cost, point out how little you actually spent compared to the market...or you could say you need to do your part to keep the industry viable!

Keeping you in stitches,
Marie Anderson
President



OFFICERS & COORDINATORS

President:

Marie Anderson 503-481-5117
president@mthoodquiltguild.com

Vice President:

Julie Hale 503-758-6869
Debbie Stoffer 503-730-3818
vicepresident@mthoodquiltguild.com

Treasurer:

Ann Marie Rears 503-784-0089
treasurer@mthoodquiltguild.com

Secretary:

Denise Bush 503-477-0253
secretary@mthoodquiltguild.com

Membership Chair:

Penny Gesdahl 503-820-9935
membership@mthoodquiltguild.com

Community Outreach Coordinator:

Delleen Kompkoff 503-575-8327
communityoutreach@mthoodquiltguild.com

Small Group Coordinator:

Susan Ainsworth Smith 503-577-1434
smallgroups@mthoodquiltguild.com

Challenge Coordinator:

Lori Oathes 503-329-1707
challengecoordinator@mthoodquiltguild.com

Newsletter Editor:

MHQG Board
newsletter@mthoodquiltguild.com

Web Editor:

Debra O'Donnell 503-504-2354
website@mthoodquiltguild.com

Quilt Show Committee Chair:

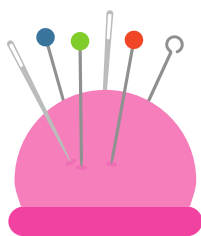
Shirley Workman 503-659-3517
quiltshow@mthoodquiltguild.com

AdHoc Chair:

Dottie Miller 503-754-3819
Adhoc@mthoodquiltguild.com

Vice President's Message

September's Program will be Sparkly Threads by Nancy Goldsworthy. Nancy will be presenting a wide variety of specialty threads to make your next project Shine! Learn how to use today's needles to help you get better stitches with even the fussiest threads. See how bobbin threads affect your top threads. Mix things up with some simple couching options and how about using a simple stitch with a variegated thread to bind your next quilt? Lots of ideas to make your holidays sparkle. Sign up during Sept. guild meeting for live in person class scheduled Oct. 8 from 10-2 at the church. \$30, limited to 16 people



September Birthdays

Jacque Pancoast	9/3
M.Lou Devine	9/7
Mary Ann Sommerset	9/8
Mary Flaum	9/14
Linda Gaudette-Sigel	9/15
Danielle Henyon	9/18
Jan Lindquist	9/18
Smitty Price	9/18
Susan Foster	9/23
Penny Gesdahl	9/23
Delleen Kompkoff	9/23
Susan Ainsworth Smith	9/27
Laura Rom	9/27
Debby Potter	9/28
Carolyn Smith	9/29
Kathy Boden	9/30

Treasurer's Report July 31, 2022



Opening Balance Credit Union	\$ 21,129.28
Petty Cash	133.92
Total Beginning Balance	\$ 21,263.20
<u>Income</u>	
Summer Sale	2,700.22
Quilt Show-Raffle	74.00
Quilt Show-Vendor Reg	500.00
Dues & Guest Fees	1,525.00
Interest income	0.59
Total Income	\$ 4,799.81
<u>Expenses</u>	
Computer & internet expenses	14.90
Comfort Quilt supplies	279.60
Storage Facility	2,372.00
Storage Facility Insurance	108.00
Quilt Show printing	240.00
Rent, Guild Meeting Place	1,000.00
Total Expenses	\$ 4,014.50
Current MHQG Balance	\$ 22,048.51
Less Restricted Funds	
Charitable activity	3,409.66
Electrical cord grant	37.03
	\$ 3,446.69
Net Balance Unrestricted Funds	\$ 18,601.82



Message from Membership



It's hard to believe it is already September, where has the summer gone? Our August meeting in the Park was a great success with many members renewing and a few new members joining in.

LAST CALL FOR MEMBERSHIP RENEWAL is coming up at the end of this month. After September 30th there will be a new password to get into the Members' Area section of our website and if your dues are not paid you will not be able to get in.

To renew you can either mail in a check or renew at the meeting with either a check or cash, or you can pay on line with your PayPal account. Mailing in your Renewal Form (which you can find on line at our website, click on the "About" page from the menu.) At the bottom there is a form you can download, print and fill out. Mail it with your check to Mt. Hood Quilt Guild, PO Box 2376. Gresham, OR 97030. The form is here: <http://www.mthoodquiltguild.org/about>

To pay with a PayPal account you need to either have one or set up one at the time to use this method. Go to the Menu on the Website that says "Membership Renewal and New". Click that and choose the appropriate type of form, (individual or business) and hit add to cart. Fill out the form and hit add to cart again and then you can go to the cart which is in a little black box and check out with PayPal. The form automatically comes to us with the information and you're all done! Here's the link: <http://www.mthoodquiltguild.org/membership-renewal-and-new>

If you have any questions or concerns, please contact me at membership@mthoodquiltguild.com or 503-820-9935

Thanks so much!! Penny Gesdahl

P.S. If you don't have a printer, just send in a note with your check & it will be just fine.

BOARD MEETINGS

All guild member are encouraged to join in the guild board meetings!

The meetings are the Tuesday 2 weeks prior

to the general meetings at 6:30PM.

Next meeting will be on Zoom

If you are interested in reading the minutes of the meetings they are located on the Members' page of the website.

[Click here](#) to read.

Contact any board member for info.

**Shhh! The
Secret
Word is:
Stash**

Calling all Members!
Let's all grab some
Quilt Show Bookmarks
from the Membership
Table to pass out to
our friends, neighbors
and businesses we
frequent.
Share the Swag!



Mt. Hood
Quilt Guild
**QUILT
SHOW**

**Friday - Saturday
October 14 - 15
9 AM - 4 PM**

Mountainview Christian Church
1890 NE Cleveland Ave.
Gresham, OR 97030

ADMISSION \$5.00



**Quilts - Quilts - Quilts
Vendors
Boutique Items
Raffle Baskets
Nibbles Rest Stop**

**For more information, contact
Shirley at 503 659 3517
quiltshow@mthoodquiltguild.com**



SEPTEMBER 2022 BLOCK OF THE MONTH - PUMPKIN

Yes it may be a bit early for pumpkins, especially with temperatures in the 90's, but by sending this pattern out now, we have a *little* better chance to make something with it for fall. This is an easy pattern with fairly large pieces that goes together so quickly you may want to make more than one! Maybe even make one for yourself! This block will be in fall colors, and lends itself nicely to a table runner or wall hanging.

[The pattern is posted on the Guild website in the Project Of the Month section. Click Here](#)

BOM DRAWING: One block = 1 ticket for the drawing. The winner of this month's drawing will also get a little extra something to go with your pumpkins.

What is the Block Of the Month or "BOM"?

Each month the Guild has a Block Of the Month challenge where a specific free pattern is designated for interested guild members to make. The block(s) are then made and brought to the meeting to turn in for a drawing. The blocks are displayed with the hopes of inspiring all members. One ticket is given for each block turned in.

The blocks are then raffled off and the winner gets all the blocks!

Each block has at least one specific skill to practice or learn to keep our skills sharp. This month we see an example of a diagonal seam. The blocks are chosen to include all skill levels. So whether you are learning something new, or just want to be creative, give it a try!

You may win the blocks to make something special !



Quilts of the East Wind MHQG Quilt Show

2022
UPDATE

Coming Soon: October 14th and 15th

It is only six weeks until the Quilts of the East Wind- the Mt Hood Quilt Guild's quilt show. The show is about you the members of this fine organization. It's what we do and what we love. So, get your Quilt Entry Forms filled out and ready to turn in at the September meeting. If you are not able to make it to the meeting, mail the forms to the guild P. O. Box 2376, Gresham, OR 97030), or have a friend bring your forms to the meeting. If, none of this works call me (Shirley 503 659 3517). If your quilt is still in the process take a picture of what you have and send it with the Entry Form.

We are going to have a very busy September meeting besides accepting your Entry Forms, we will be selling raffle tickets for the Raffle Quilt and accepting your donations for both the Boutique and the Raffle Baskets. See the following article for The Boutique.

Raffle Baskets have been a very successful money maker at other quilt shows and other events, that is why we have chosen to include them in our show. Our themes are Fall/Harvest; Games; Kitchen; Garden, Quilting and Wine and Dine. Any item that makes you think of the theme would be good. For the Wine and Dine basket we have a bottle of wine and a very nice gift certificate for dinner at Bocelli's Restaurant in Gresham. So, if your family has a favorite thing to do for Halloween, ask the venue for a donation for the Fall/Harvest basket. I think many people would like a nice swag or wreath for Christmas; check with your favorite Garden Center for what they might donate for the Garden basket. These are just some ideas that would make these baskets special.

 *More Information*

...And if that is not enough, we will begin the process of recruiting workers for the show. There is a large variety of jobs to be completed from sitting at the Admissions table to very physical parts of the set-up and many jobs in between. I've included a list of areas so that you will have a bit of an idea of what you are signing-up for. The times other than during the show are tentative and will be set later.

<u>October 11</u> (prior to meeting)	Take in Quilts	both active and seated
--------------------------------------	----------------	------------------------

<u>October 13</u> (early afternoon)	Set up Stands	Very active
-------------------------------------	---------------	-------------

3 – 6p.m.	Sort Quilts	Active
-----------	-------------	--------

3 – 6p.m.	Hanging Quilts	Active
-----------	----------------	--------

October 14 & 15

During the show	Admissions	Seated
2 hour shifts	Raffle Quilt	light active (chair available)
	Raffle Baskets	light active (chair available)

White Glove/Greeter	Active	
---------------------	--------	--

October 15

After show

4 – 6p.m.

Taking down Quilts	Active
--------------------	--------

Taking down stands	Very active
--------------------	-------------

Sorting Quilts and	Active
--------------------	--------

Returning	some seated
-----------	-------------

Sorting and boxing	Active
--------------------	--------

Drapes & Hangers	
------------------	--

Everyone that volunteers will receive two passes to the show.

One for you and one for a friend.

With all your help we will have a great show. Thanks

Any comments or suggestions are always welcome by either email

quiltshow@mthoodquiltguild.com

or a phone call to me at 503 659 3517.

Shirley Workman, Quilt Show Chair

[Quilt Entry Information and Instructions for the 2022 MHQG Quilt Show](#)

[Click here to print a Quilt Entry Form](#)

Boutique News & Call for Volunteers!

Greetings, and a huge thank you to all who have already donated beautiful creations for sale at the October Quilt Show Boutique. We ('quilting partners in crime', aka Janet Larson and Raye Ann Yapp) are grateful for and impressed by the donations received thus far; we have bowl cozies, table runners, coffee cup insulators, iPhone holders, and too much more to mention...but, we need your creations as well.

Do you have an idea for a project that you like to make, or would love to receive as a gift? Or, are you more of the tell-me-what-you-want-and-I'll-create-it sort? Janet and Raye Ann have suggestions for both scenarios...but here are some examples of what sold well at the last Boutique Sale:

All things batik

Bowl cozies (have quite a few already)

Chicken & child-themed items

Table runners

Fabric boxes

Dish towels with fabric toppers

Cutting mat/grid flat bags

Luggage tags

Wine bottle gift bags (with or without glass cozies)

Zipper travel bags

Quilts - all sizes

Wall hangings

Cord keepers

Barn quilt blocks, painted - small for int/ext decorations

If you'd like to contribute, we want to hear of your plans and get an idea of how many and what types of projects you can offer. Please contact us by Monday, September 26th so we can plan for the display of the many incredible works you're making:

rayeannyapp@gmail.com

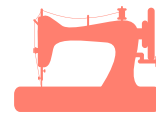
sodalarson@gmail.com

The Boutique also needs workers **before the show** to set up tables, price and display items for sale, and to greet, cashier, and manage inventory **during the show**, and to pack up and inventory unsold items and take down displays and tables **after the show**.

Volunteers will receive two passes to the full quilt show!

Look for signup tables at the September 13th general membership meeting at the back of the church meeting room. Sign up for a whole day, or a shorter shift such as a couple of hours. Everyone is welcome no matter how long you can commit! If you can't attend the September 13th meeting, you can contact Janet or Raye Ann to sign up for Boutique duty.

The last Boutique sale made over \$2,000! All of these proceeds are used directly to fund not only the ongoing purposes of the guild, but to support the giving practices that benefit a host of individuals and deserving groups. You can see a list of the guild's recipients in this newsletter, and there are many!



Remember the popsicles from the last meeting? Not the ones we ate, the ones we sewed as a challenge? I'm sure when Lori chose that activity, she had no idea it would be so popular!

A month later.....the blocks are sewn together, quilted, bound, and ready to be donated. Thank you to everyone who made a block, or 14 blocks! Your donation of time and fabric is going to a great place where it will be cherished.

Because of Linda's generosity, the quilt will be hanging in the offices of the Kids Center in Bend. One of the staff members there works hard to serve the needs of kids and families, but also works to decorate the building with wall quilts. These quilts really make the place welcoming, reflect the seasons and holidays, and are different from the donated quilts that kids choose to keep as their own. (However, she has been known to remove a quilt from the wall, if a child really wants it.)

Donated fabric from our guild has also been used to make exam gowns, fabric drapes, pillowcases, and several auction quilts over the years. They also just got some hand puppets made from donated felt.

How did the Bend connection begin? They asked for our help! The personal connection! Maybe you know of a place that could use some support with our talent and donated fabric. Be sure to let us know if you have an idea for community support. Over the years, we have made a variety of things - not just quilts.

Colleen Anthony has agreed to become the contact person for Hopewell House quilt donations. These quilts will be similar to the ones used for Passage Quilts, and the VA Hospital. You may want to keep this in mind as you are selecting a project for donation. It's so helpful to have one contact person who agrees to facilitate communication and delivery for the agencies we support. That gives me a big chunk of time to make kits and quilt the tops as they come in.

Thank you to all the great members who support our program in so many ways!!



These are the people who signed out kits, and returned quilts last month.

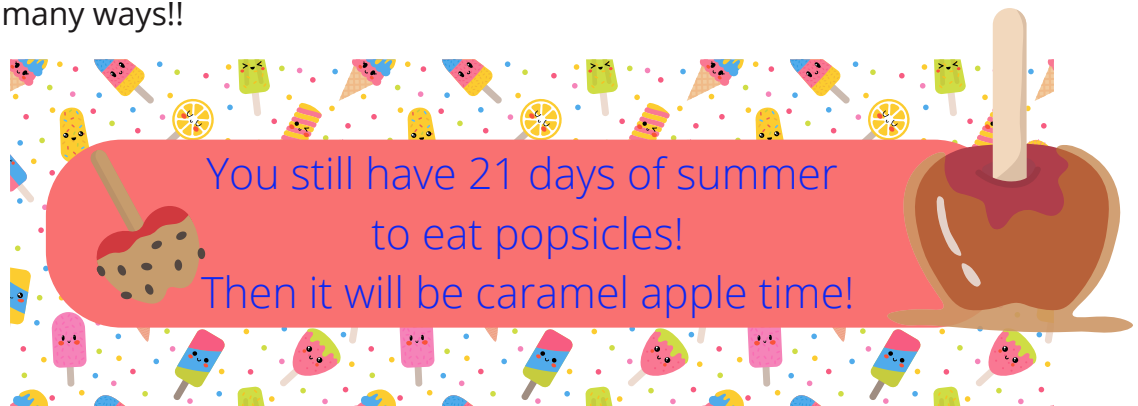
- Barbara H
- Debbi R
- Debbie H
- Jackie
- Jacquie
- Jere
- Liz
- Linda
- Raye Ann

ADD YOUR NAME THIS MONTH



These are the people who make quilt deliveries for us.

- Anne Marie
- Becky
- Colleen
- Lori
- Susan



Mt. Hood Quilt Guild Small Groups

Coordinator: Susan Ainsworth Smith 503-577-1434
smallgroups@mthoodquiltguild.com

Please call or email the contact person listed if you are interested in any of these groups.
If you form a group, please let Susan know and it will be listed here.

SEW HAPPY

Meets 4th Monday 10-3
Now meeting in person
Contact: Laura Rom
puma01.laura@gmail.com
971.244.2304

THE GRATEFUL THREAD

Machine Embroidery Group

Meets 3rd Thursday 9 am to noon
via Zoom, link below
9:00 a.m. to 12:00 p.m.
Contact: Carol Sandberg
503-318-7944
quiltmama050705@gmail.com

Join Zoom Meeting

[https://us02web.zoom.us/j/89972089858?](https://us02web.zoom.us/j/89972089858?pwd=TGFwVWlHYklnRmtDZ2JSUWpYi9ZQT09)
[pwd=TGFwVWlHYklnRmtDZ2JSUWpYi9ZQT09](https://us02web.zoom.us/j/89972089858?pwd=TGFwVWlHYklnRmtDZ2JSUWpYi9ZQT09)
Meeting ID: 899 7208 9858
Passcode: 297507

OPEN SEW

Meets 1st Sunday from 10-3 via Zoom

[https://us02web.zoom.us/j/82093838229?](https://us02web.zoom.us/j/82093838229?pwd=S0VWZ3V1Y1BYjk0eVJObm5Fblk0dz09)
[pwd=S0VWZ3V1Y1BYjk0eVJObm5Fblk0dz09](https://us02web.zoom.us/j/82093838229?pwd=S0VWZ3V1Y1BYjk0eVJObm5Fblk0dz09)

Meeting ID: 820 9383 8229
Passcode: 402217

Contact: Linda Danley 360-721-3016

MYSTERY MAVENS

Meets 1st Monday 10-5 via Zoom
Contact: Terry Knott
quilting00@aol.com
503.804.6367

WEDNESDAY SEWCIAL CLUB

Meets every Wednesday evening via Zoom
Contact: Debbie Johnsen
Debbie.johnsen@yahoo.com
No openings 503.680.6494

HOODIES

Time & Date TBA
Contact: Susan Ainsworth Smith
503-577-1434



The Corvallis Modern Quilt Guild is happy to announce that they have opened up registration for a class with Lisa Hoffmann-Maurer, @seewhatyoulove. This class is over Zoom since Lisa lives in Switzerland. Included is a link to their website with the class description in their guild's online store. The photo is of Lisa and the quilt/technique she will be teaching.

<https://corvallismodernquiltguild.org/store-2/>

MEETING NOTES

MHQG Members Meeting
August 9, 2022

The Social in the Park started at 6:00pm.

Marie started the meeting at 7:00pm.

- Welcome to new members.

- Voting for Vice President & Secretary: Vice President - Julie Hale & Debbie Stoffer

Denise Bush- Secretary. All voted in

- Voting on By-laws: reviewed the updates on mail, dates, purpose and electronic communications: voted on and accepted.

- Delleen said goodbye to the Vice President- Dottie Miller and Secretary- Linda Gaudette-Sigel

- Debbie Stoffer: speakers- Donna T and Liz S. : Learn how to make Barn Blocks. 2x2 works for a sheet of plywood- 1/2" to 3/4" thick. Paint board front/back/sides white- exterior white satin- 2-3 coats. Pick a pattern- start easy!! Don't start out with a circle! Do the math to draw the pattern on the board with a pencil. Don't use the blue tape- use Frog tape! Best to use exterior home paint. Craft paint fades & cracks. Home depot or Lowe's has small sample size of any color. 3-4 coats of paint- needs to dry about 30 minutes before the next coat. Use 1/2" brush for 2x2 board. Foam brushes don't work very well. One color at a time. Needs to be completely dry before starting the next color. Donna likes to use a varathane to cover when all done. Hanging- use what works for where you want to hang. Ace hardware is good about helping decide, Hooks for hanging on the fence. The hand out will be in next months newsletter. Barn Quilt Headquarters (might be a \$5 charge)- lots of ideas. Check in lumber section for mis-cuts for better prices. Can also do it on a concrete floor- just use concrete paint. Can do smaller size Barn Blocks for the Boutique for the Quilt Show. If the Barn Block is going to be inside you can use craft paint.

- Announcements: To enter a quilt in the Show you need to be a member of the Guild. Buy Raffle tickets. Janet and Rae Lynn are taking items for the Boutique. Shirley and Virginia are taking Quilt Show quilt registrations.

- Fill a bag and Fabric Find are here today.

- Break for the ice cream!

- Zoom- 10 people.

In person- 69 + 2 guests

- September 10th: Coffee Creek is having its annual sale.

September 17th: High Desert Quilt Guild is having their Quilt Show in Redmond

October 20-22: QuiltFest NW Fiber Arts Show in Ridgefield, WA.

- Retreat moved to 2023- need someone to run the retreat- no retreat if there is not a volunteer and we lose our deposit

- BOM: Delleen standing in for Lori O. Martha B made 15! Also get the ice cream fabric. Linda G-S won.

- * More Quilt Show info: The sizes are for planning purposes. There is a maximum size. Sleeve on your quilt- large quilts don't need one, small quilts it helps for hanging them at different levels. Instructions are in the newsletter. There is a handout for this too. The next members meeting (September) there will be sign ups for volunteer activities. Need help getting the bookmarks out- there are packs of 100 to hand out. Some husbands are moving the heavy equipment from Milwaukie Center- if you have someone who can help- need about 4 guys on August 17th to move the equipment- if someone needs community service hours- they can help! We have money to give a stipend for youth/sports groups. Call or email Shirley for other questions.

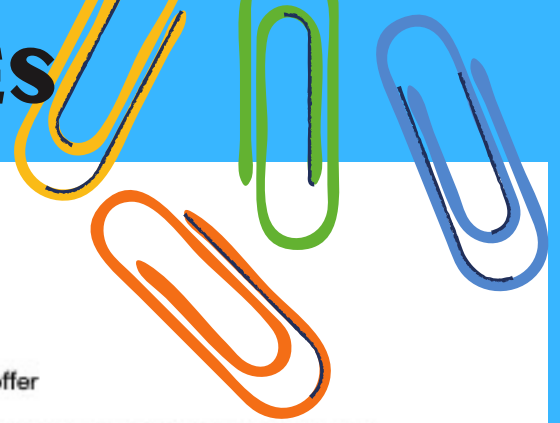
- Birthday winner for August: Harriet Sparrows

- Parade of donation/charity quilts. Most of our quilts are touched by 3-4 people to get it done. Human Solutions to Susan A-S , Ronald McDonald to Ann Marie, and Passages to Becky.

- October 21 & 22 Tomme is teaching Beginning Quilting through Mt. Hood Community College, in person, 9:00am-4:00pm. Approximately \$100

- Show and Share

- Marie ended the official meeting at 8:12pm



OUR JUST FUTURE



A Bold New Name and Vision for the Future

**NEW NAME
SAME NEEDS**

DONATE NEW ITEMS TO EMERGENCY SHELTERS

We'll accept some gently used items in certain situations. Contact volunteers@ourjustfuture.org or (871) 806-7789 for more info.

CLOTHING Undergarments, Pajamas & Outerwear

DIAPERS & WIPES

BED LINENS Sized for Cots, Twin, Full & Queen

HYGIENE ITEMS Dental Care, Hair Care & Lotion

PET SUPPLIES Food, Toys, Bowls, Collars & Cleaner

OUR JUST FUTURE

Bottle Drop
Current Balance \$429.50



MHQG T-shirts



For Sale at the Meeting for \$15.00
Contact Dottie if you would like one.



At each guild meeting, Susan will have her red wagon available for your donations to **Our Just Future (formerly Human Solutions)**. Items are delivered to the Women's Shelter. They will disperse items to the Lilac Family Shelter as appropriate.



We even take school supplies!



**SKIP A WEEK
FABRIC SALES
THIS MONTH AT THE MEETING**

**FREE
TABLE**



Share your extra quilt stuff with others!

Raffle Quilt tickets will be for sale at the September meeting!



Mt. Hood
Quilt Guild
**QUILT
SHOW**

Friday - Saturday
October 14 - 15
9 AM - 4 PM

Mountainview Christian Church
1890 NE Cleveland Ave. ~ Gresham

ADMISSION \$5

BOUTIQUE ITEMS - VENDORS

RAFFLE QUILT TICKETS

\$1 OR 6 FOR \$5

SPONSORED BY

MONTAVILLA
SEWING CENTERS
- Est. 1947 -



For more info: quiltshow@mthoodquiltguild.com

Support our Business Members

Craft Warehouse

Gresham Station Shopping Center
687 NW 12th St, Gresham, OR 97030
503-907-3137
www.craftwarehouse.com Facebook

Crafty Staci

Staci Wendland
craftystaci@gmail.com
craftystaci.com
Facebook

Domke Farms

36801 SE Proctor Rd. Boring, OR 97009
662-380-3743
sewfabamy@gmail.com
domkefarms.com
Instagram

Fabric Sweet Fabric

Janet Novak
3583 NE 218th Ave, Fairview, OR 97024
503-572-8679
fabricsweetfabric@gmail.com
Facebook
Fabric Sweet Fabric on Etsy

Feather Your Nest Quilt Store

Kris and Abbi Howatt
130 N. Main Gresham, OR 97030
971-220-0936
FeatheredNest97030@gmail.com
featheryournestquiltstore.com
etsy.com/shop/FeatheredNest97030

Heidi's Garden Quilting

Heidi Oliver
16474 Swan Ave, Oregon City, OR 97045
503-421-4327
jrtiluv@comcast.net
heidisgardenquilting.com
Facebook

Kelly Creek Studio

Longarm Machine Quilting Service
Susan Ainsworth Smith,
503-577-1434
sainsworthquilts@gmail.com
Facebook & Instagram

Marie's Custom Quilting

Marie Anderson
59 NE 3rd St, Gresham, OR 97030
503-481-5117
marieandersono@hotmail.com
mariescustomquilting.com
Facebook

Moravec Family Quilting

Jeanette Moravec
5288 SE El Centro Way, Milwaukie, OR 97267
(319) 427-0138
moravecfamilyquilting@outlook.com

My Quilting Loft

Kristi Villani
253 E Historic Columbia River Hwy, Troutdale, OR 97060
971-231-5638,
kristi@myquiltingloft.com
myquiltingloft.com
Facebook, Community Facebook Group

Nine Patch Quilting

Nancy Goldsworthy
503-256-0746
ninepatchquilting@comcast.net
www.ninepatchquilting.com

Save Stores

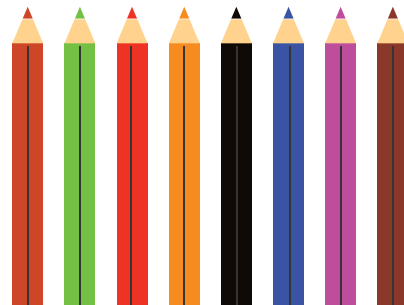
1900 McLoughlin Blvd, Oregon City, OR
503-655-4414
6701 SE Foster Rd, Portland OR
503-775-7283
savestores.com
Facebook

Shepherd's Garden Quilting

Rebecca Tellez
775 NE 9th St, Gresham, OR 97030
503-888-3415
rebecca@shepherdsgardenquilting.com
shepherdsgardenquilting.com
Facebook

Women-SEW Global Foundation

LaVerne Lewis
3604 SE Powell Valley Rd #324
Gresham, OR 97080
503-674-2574
lavernel@womensewglobalfoundation.org
womensewglobalfoundation.org
Facebook



News from Other Guilds

Press release from Clark County Quilters about QFNW click here to read it.

Sunshine & Roses

Quilting is an Act of Love!

Quiltfest Northwest

47th Annual Regional
Quilt & Fiber Arts Show
October 20-22, 2022
Clark County Event Center
17402 NE Delfel Rd., Ridgefield WA

- Felida Friends Exhibit
- Quilts of Valor Exhibit
- Cherrywood 'Diana' Exhibit
- Fort Vancouver Tapestry
- Special Exhibits & Events
- Vendor Mall
- Door Prizes and more!

ADMISSION:
Doors open 10 am - 4 pm
\$8 per day/\$15 3-day pass
Free for children under 12
Military Discount
Parking \$6 cash or card



Quiltfest NW

For more details:
Quiltfestnw.org



Clark County Quilters




Quilt Show

HIGH DESERT QUILT GUILD
Redmond, Oregon
highdesertquiltguild.org

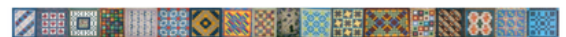
Saturday
September 17, 2022
10am - 4pm

Quilts for sale, Raffle Quilts, Silent Auction
and a Country Store with holiday items.

Featured Quilter
Stef Hutton

at
Highland Baptist Church
3100 SW Highland Ave. / Hwy 126
Redmond, OR

Admission \$2.00

Coffee Creek Quilters

Annual Fabric Sale Saturday, September 10, 2022
8 am - 2 pm

Half price reductions from noon to 2:00 pm
Fat quarters and 1/2 yards not discounted

St Francis Episcopal Church, Parish Hall

8818 SW Miley Rd, Wilsonville, OR
(From I-5, Charbonneau Exit)

Face masks optional unless mandated by OHA on sale date

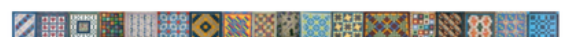
- Quilting fabrics* • Tools • Patterns
- Quilt kits • Notions • Books
- UFOs • Specialty threads • And more!

* Flat folds priced at 75¢/oz
1/2 yards priced at 50¢/each
Fat quarters priced at 25¢/each



Cash, checks, credit cards accepted
All proceeds from sales will go
to support the CCQ prison quilting program
Quilting to change women's lives, in prison and beyond

For more information about Coffee Creek Quilters
go to: www.coffeecreekquilters.org



**Click here for news from
The Quilters Hall of Fame**